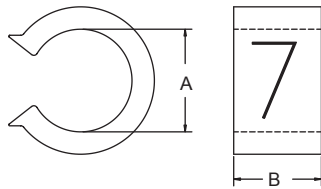


## RCCN 日成OC型开口硬质配线标志 OC Cable Marker



单位/Unit:mm

| 型号<br>Item No. | 适用电线<br>Suitable Wire                  |                                    | 号码种类<br>Std. Markings                    | 包装<br>Packing   |
|----------------|--|------------------------------------|--|-----------------|
|                | 电线称呼<br>Cable named<br>mm <sup>2</sup> | 标志内径A<br>Marker's inner dia.<br>mm |  |                 |
| OC-1           | 0.5~0.75                               | 2.5~3.0                            | 0,1,2,...9<br>A,B,C,D..Z<br>+,-,≡空白Blank | 每卷/Roll 1000pcs |
| OC-2           | 1.25~2.0                               | 3.2~3.6                            |  | 每卷/Roll 1000pcs |
| OC-3           | 3.5~5.5                                | 4.2~5.1                            |  | 每卷/Roll 1000pcs |
| OC-4           | 5.5~8.0                                | 5.1~6.2                            |  | 每卷/Roll 500pcs  |

材质: 硬质PVC.

特质: O型特点:标志体近於圆形合於电线上,不占空间.

C型优点:线路配好後再嵌入即可,不易脱落.

用途: 适用于电线已经接好再做记号.特适合网络布线的应用

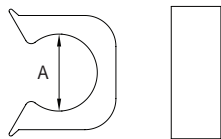
Material: Rigid PVC.

Features: O type's features:save space

C type's features:uneasy to fall off

Use: Suitable to install cables

## RCCN 日成CM型开口硬质配线标志 CM Cable Marker



单位/Unit:mm

| 型号<br>Item No. | 适用电线<br>Suitable Wire                  |                                    | 号码种类<br>Std. Markings                    | 包装<br>Packing |
|----------------|--|------------------------------------|--|---------------|
|                | 电线称呼<br>Cable named<br>mm <sup>2</sup> | 标志内径A<br>Marker's inner dia.<br>mm |  |               |
| CM-0.75        | 0.75                                   | 3.0                                | 0,1,2,...9<br>A,B,C,D..Z<br>+,-,≡空白Blank | 每包/Bag100pcs  |
| CM-1.25        | 1.25                                   | 3.2                                |  |               |
| CM-2.0         | 2.0                                    | 3.6                                |  |               |
| CM-3.5         | 3.5                                    | 4.2                                |  |               |
| CM-5.5         | 5.5                                    | 5.1                                |  |               |
| CM-8.0         | 8.0                                    | 6.2                                |  |               |

材质: 硬质PVC.

特质: O型特点:标志体近於圆形合於电线上,不占空间.

C型优点:线路配好後再嵌入即可,不易脱落.

用途: 适用于电线已经接好再做记号.特适合网络布线的  
应用

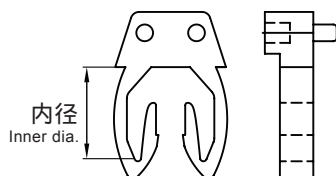
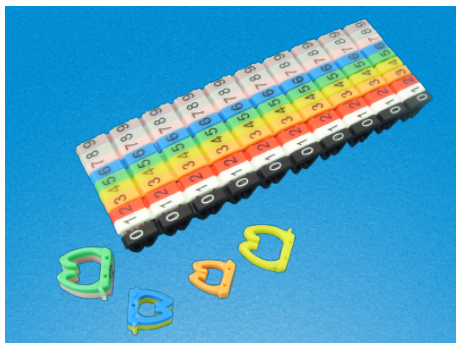
Material: Rigid PVC.

Features: O type's features:save  
space

C type's features:uneasy to  
fall off

Use: suitable to install cables

## RCCN 日成SM型开口网线配线标志 SM Cable Marker



单位/Unit:mm

| 型号<br>Item No. | 适用电线<br>Suitable Wire                  |                                    | 号码种类<br>Std. Markings | 包装<br>Packing |
|----------------|--|------------------------------------|-----------------------|---------------|
|                | 电线称呼<br>Cable named<br>mm <sup>2</sup> | 标志内径A<br>Marker's inner dia.<br>mm |                       |               |
| SM-5           | 5.5                                    | 4-6                                | 0-9                   | 0-9各10粒/1套    |
| SM-6           | 14                                     | 6-8                                | 0-9                   | 0-9各10粒/1套    |

材质: 硬质PP.

特质: 标志体近於圆形合於电线上,不占空间.线路配好後再嵌入即可,不易脱落.

用途: 适用于电线已经接好再做记号.特适合网络布线的应用.

说明: 可按用户要求独立配号.如只需要1,2,3号各50粒.

订购型号例:SM-5,1套,指0-9号各10粒,共100粒.

SM-5适合五类网线标识,SM-6适合六类网线标识.

Material: rigid PP.

Features: save space,can be installed after fixing the cables uneasy to fall off

Use: suitable to install cables.

Note: can prepared numbers as customers' request.like 1,2,3 50pcs each.

Order part no.:SM-5,1/set,means 0 to 9 10 pcs each,total 100pcs.